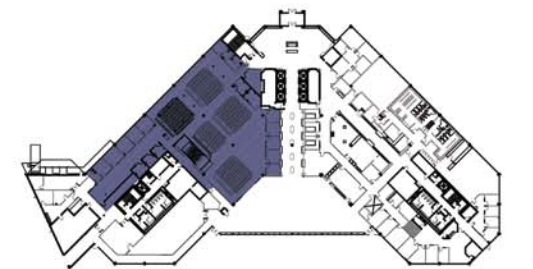
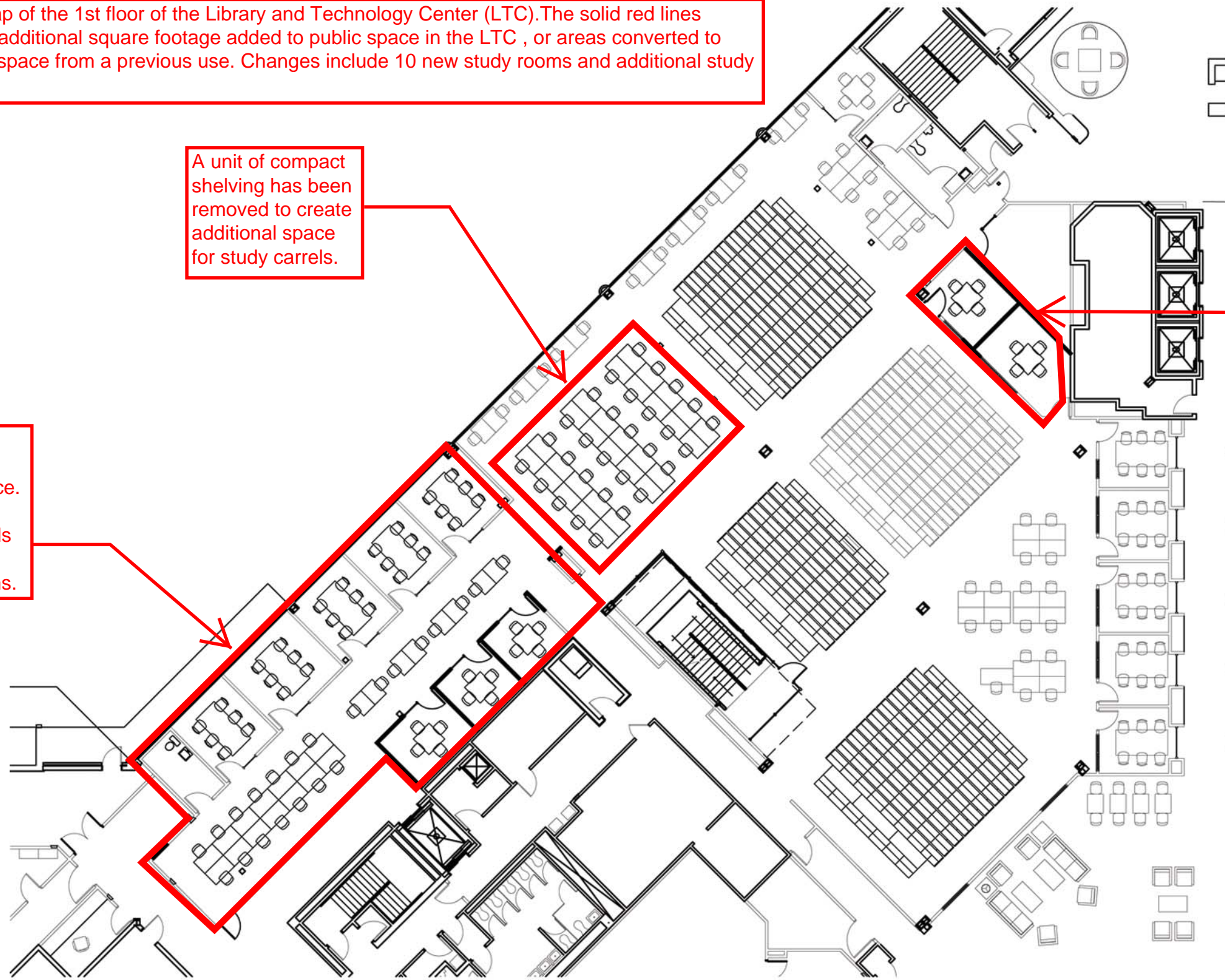


This is a new map of the 1st floor of the Library and Technology Center (LTC). The solid red lines represent either additional square footage added to public space in the LTC, or areas converted to additional study space from a previous use. Changes include 10 new study rooms and additional study carrels.

A unit of compact shelving has been removed to create additional space for study carrels.

This area has been added to public LTC space. It includes additional carrels and 8 of the 10 new study rooms.

Part of the Microform Room has been converted into 2 of the additional 10 new study rooms.



1 FIRST FLOOR PLAN - LIBRARY

LIBRARY & TECHNOLOGY CENTER